

HYDRAULIC stuffer TYPE : PHX 25



CONSTRUCTION & COMMERCE OF

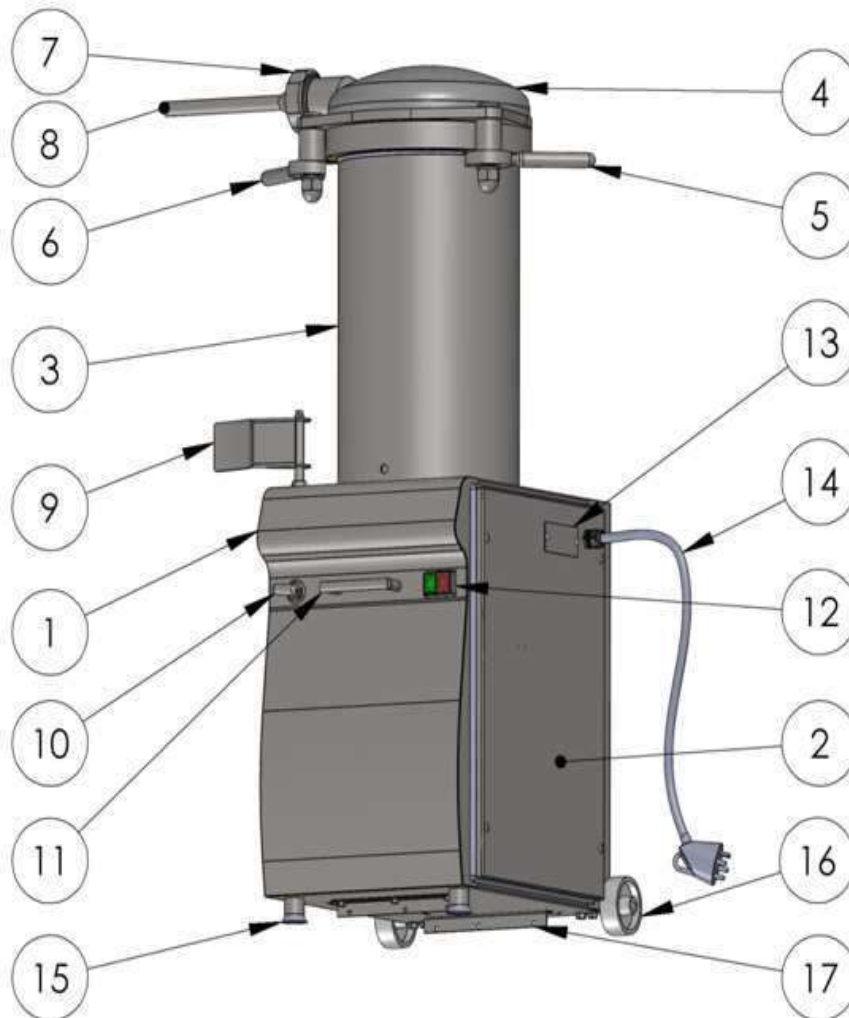
FOOD EQUIPMENTS

LE BOUCHAUD – 39800 BERSAILLIN

Tel. 03-84-85-51-71 – Fax 03-84-85-53-92

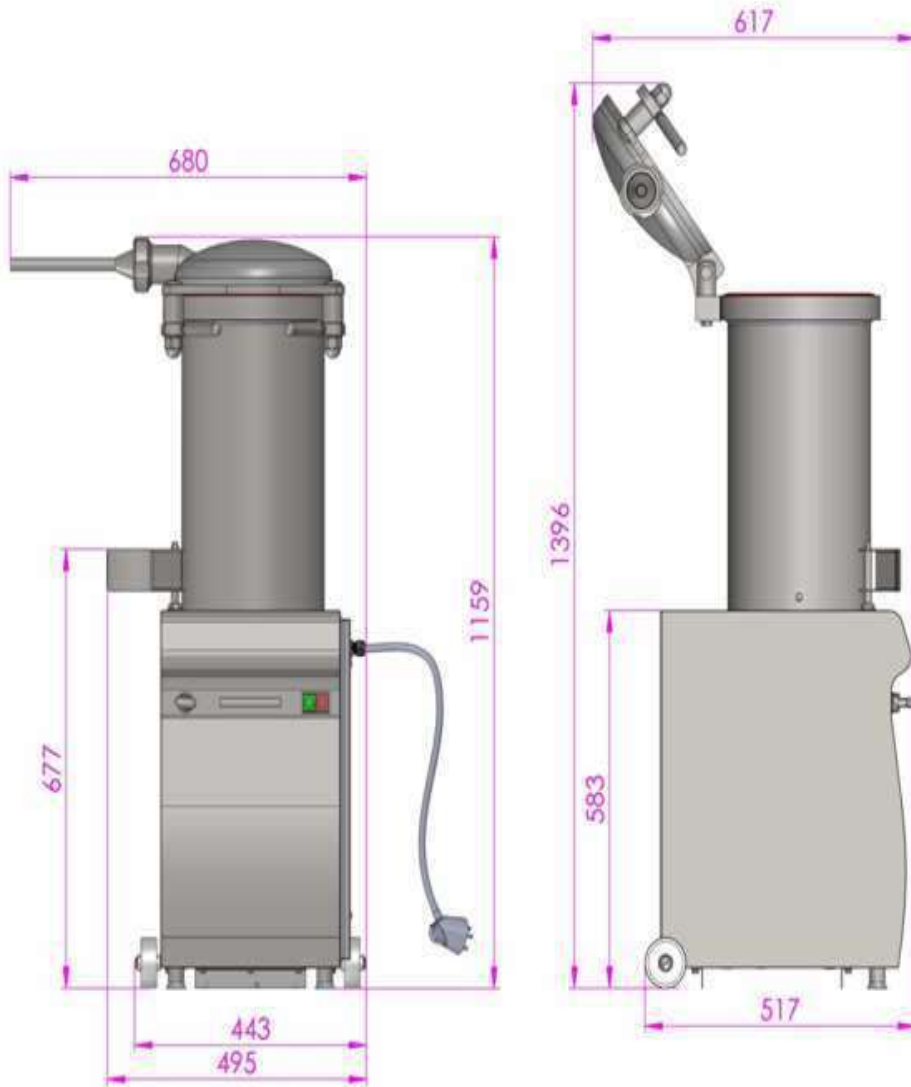
(International Fax : 33-3-84-85-53-92)

COMPONENTS OF THE STUFFER PHX 25



1. FRAME	10. Pressure limiter handle
2. DOOR	11. Moving handle
3. CYLINDER	12. On/off BUTTON
4. LID	13. MANUFACTURER'S PLATE
5. RIGHT LOCKING HANDLE	14. POWER CORD
6. LEFT LOCKING HANDLE	15. FOOT
7. FASTENING-NUT NOZZLE	16. WHEEL
8. NOZZLE	17. TRANSPORT BRACKET
9. KNEE LEVER	

DIMENSIONS OF THE STUFFER PHX 25



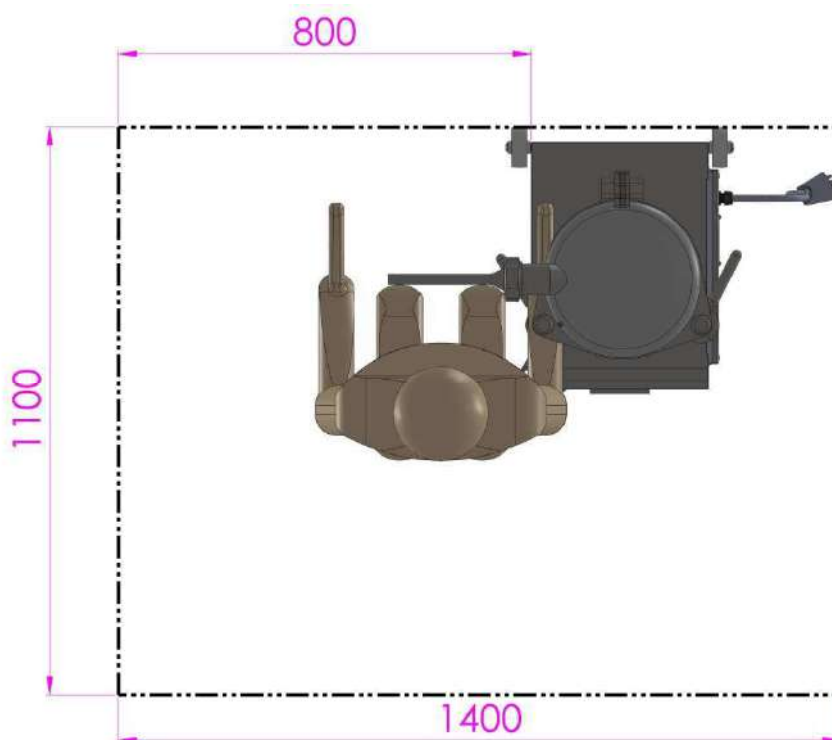
TECHNICAL DATA	
Cylinder capacity (L)	25
Weight (KG)	130
Engine power (KW)	0.75

REMOVING THE STUFFER

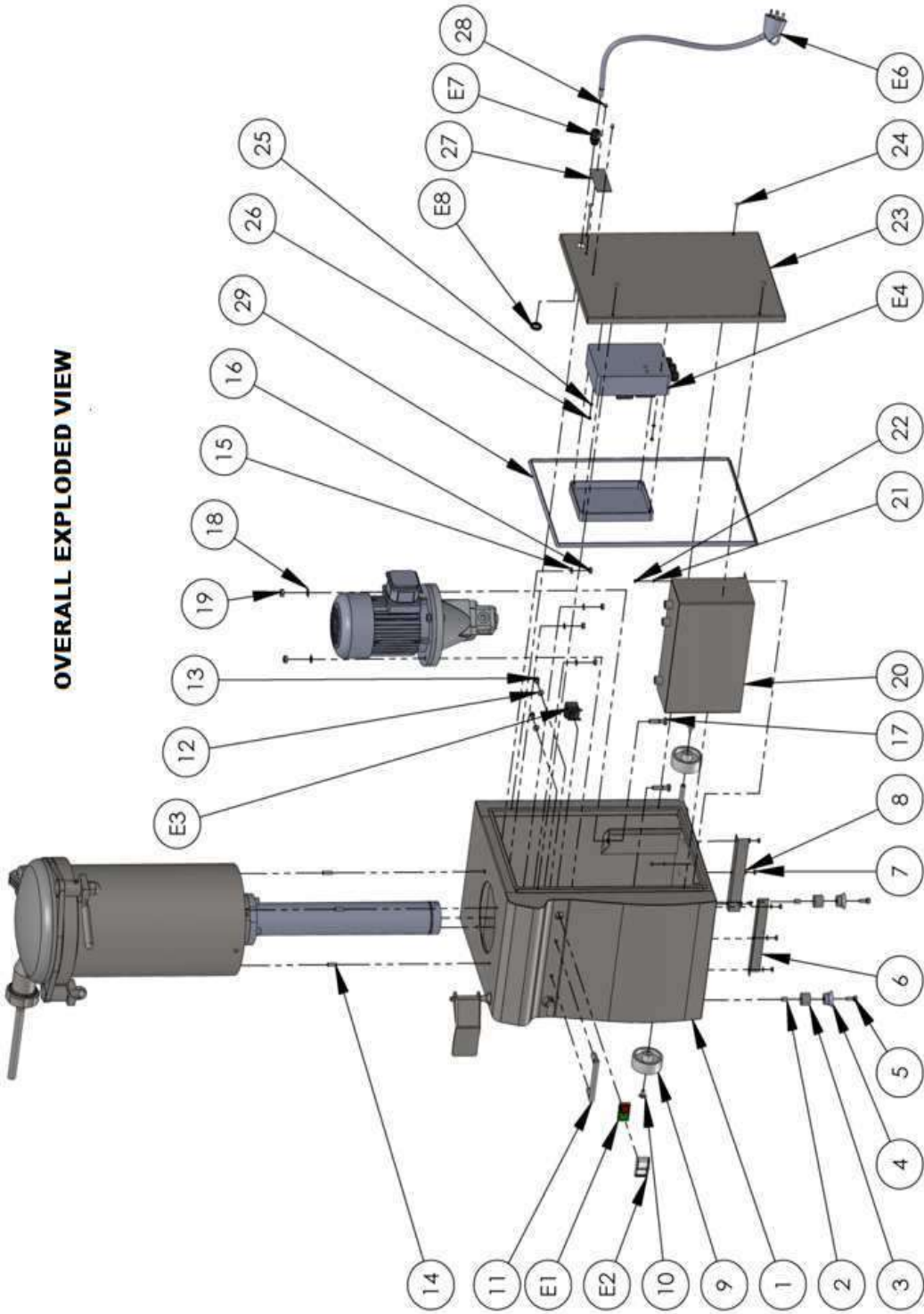


CAUTION: To remove the stuffer from its packaging, place the forks of the forklift between the rear wheels and the front legs, as shown in the above overview.

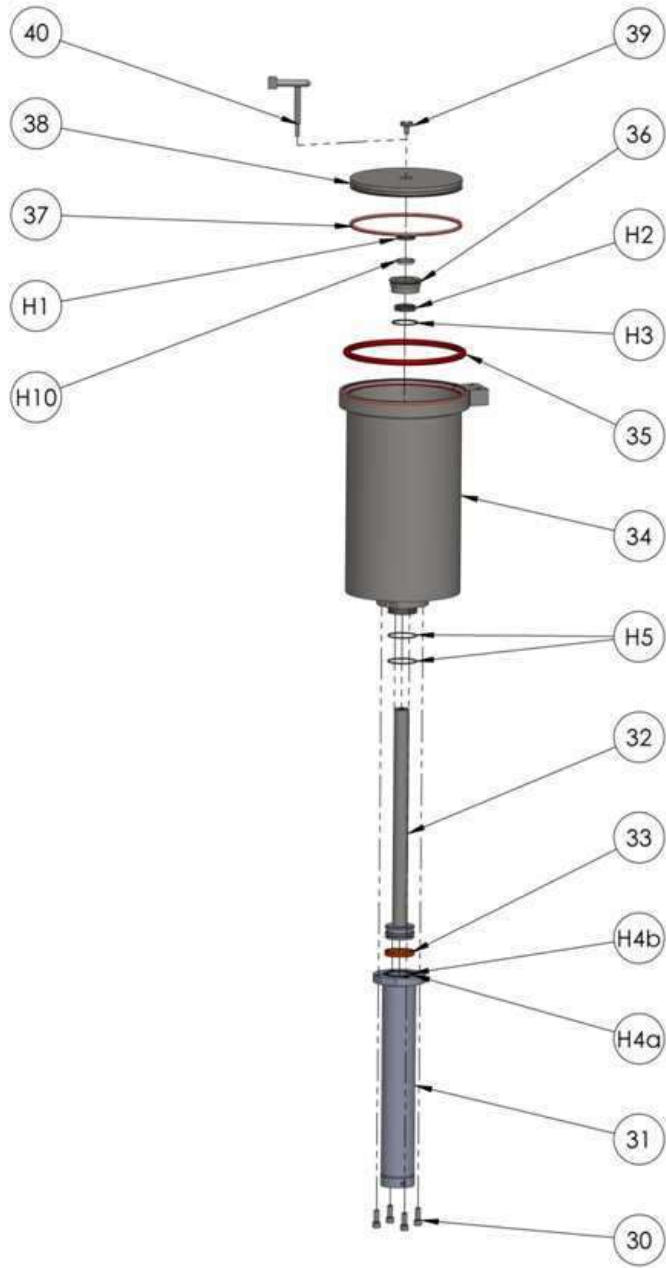
Space required for the operator to use the stuffer



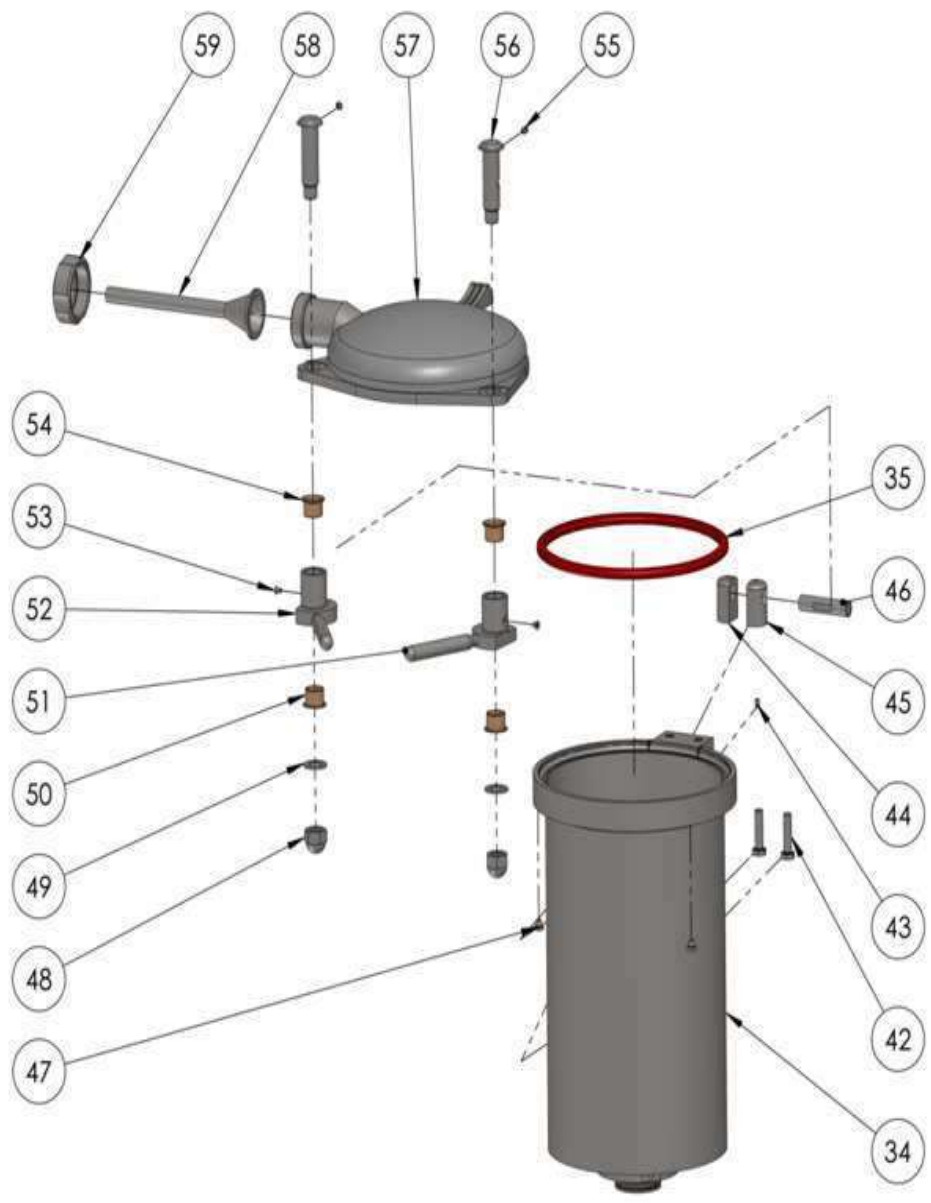
OVERALL EXPLODED VIEW



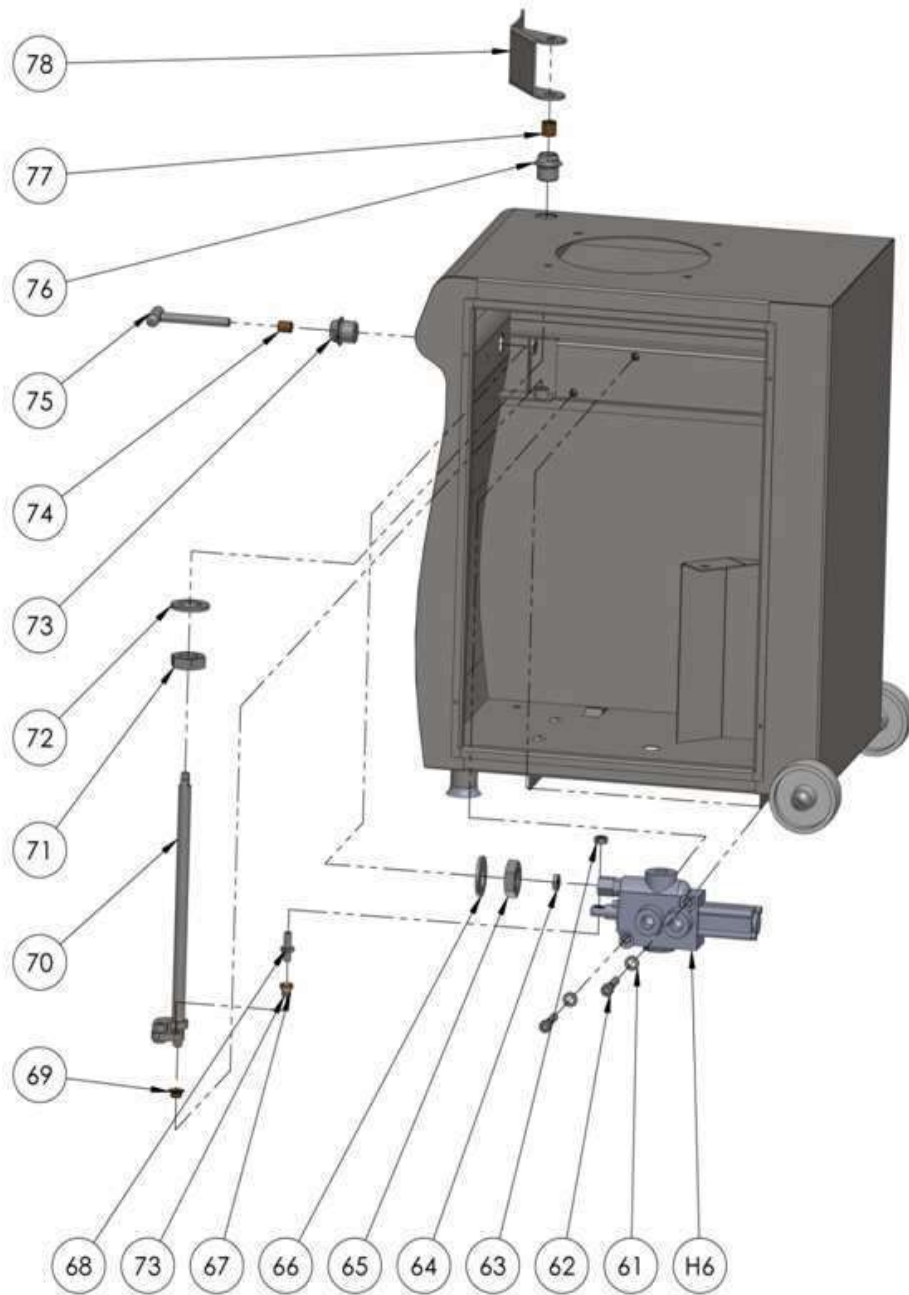
ACTUATOR AND CYLINDER EXPLODED VIEW



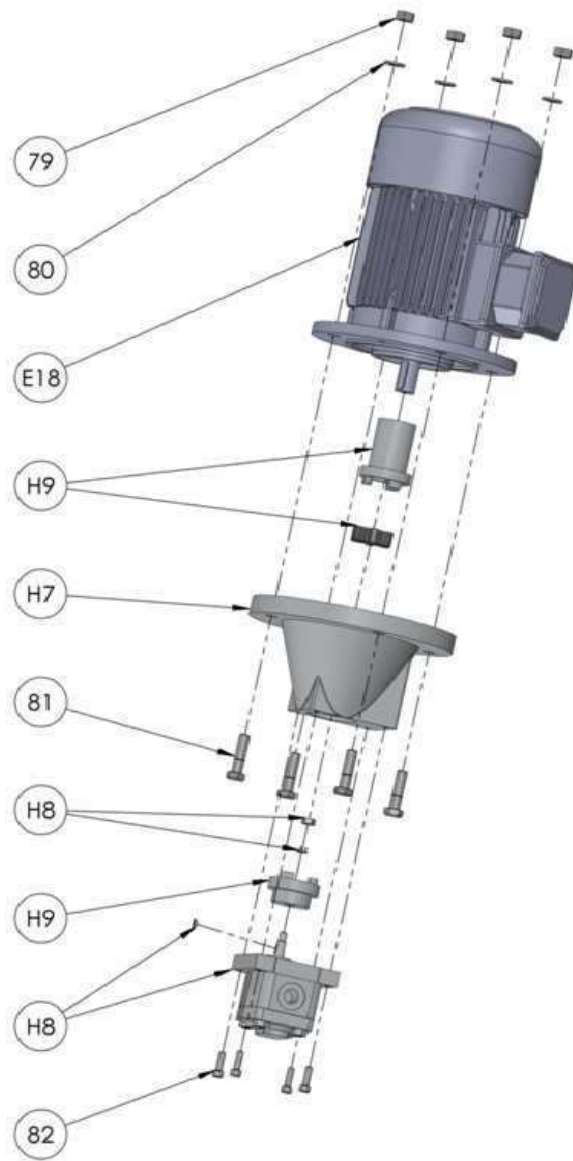
LID EXPLODED VIEW



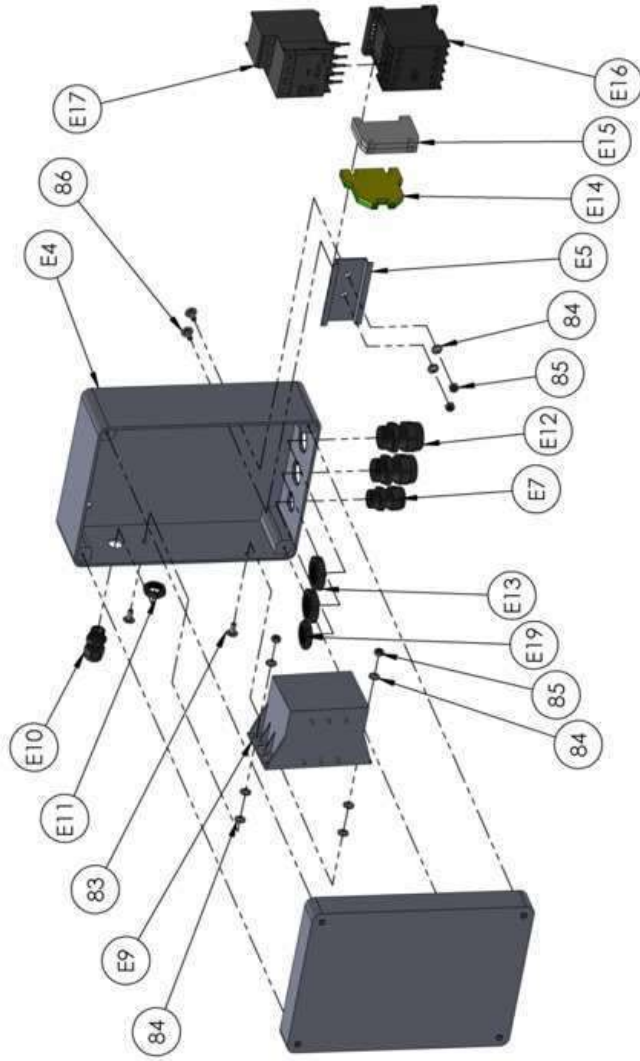
Exploded view knee lever and pressure adjustment rod



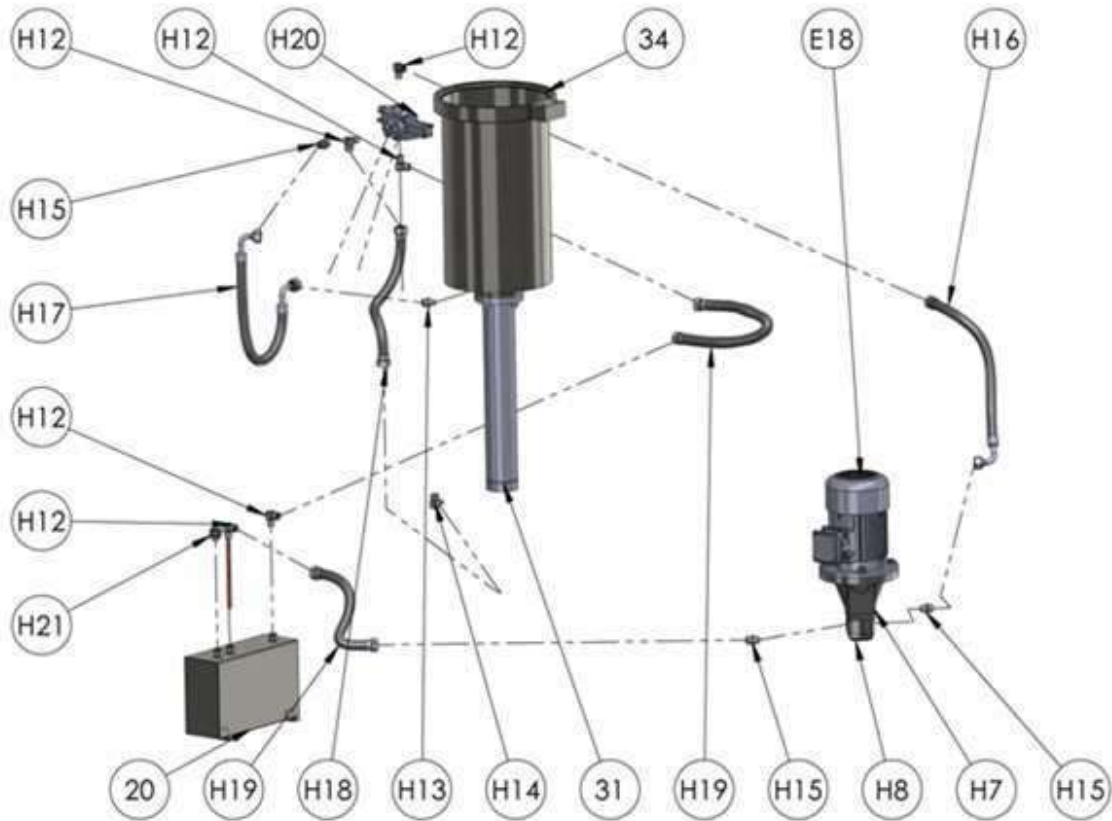
EXPLODED VIEW MOTOR AND HYDRAULIC PUMP



EXPLODED VIEW ELECTRICAL BOX



HYDRAULIC CIRCUIT PHX 25



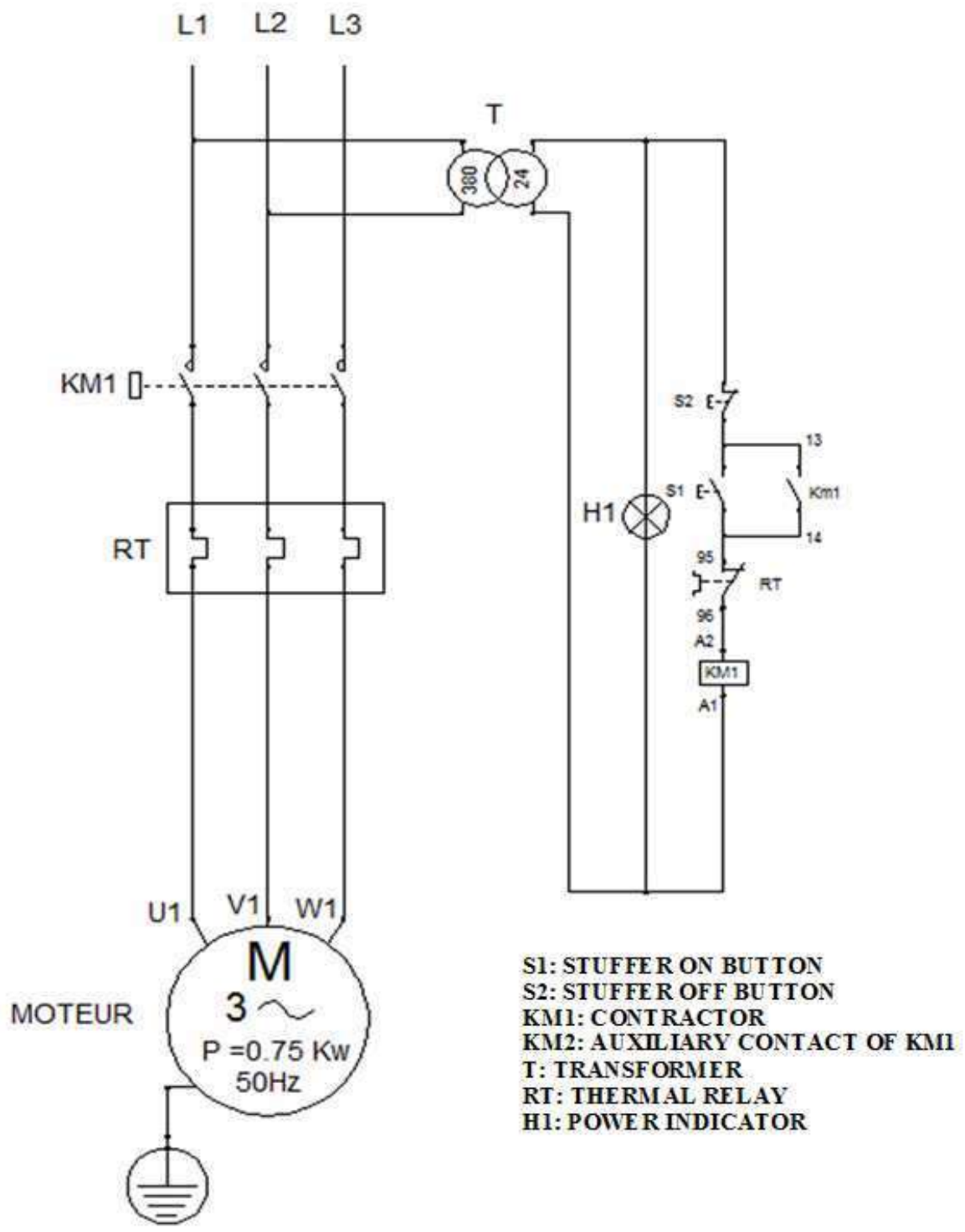
REP.	Designation	Quantity
H1	WIPER JOINT	1
H2	ROD JOINT TI-PIN 35-106	1
H3	O-RING INSERT $\phi 56.75 \times \phi 3.53$	1
H4a	PISTON JOINT SIMKO 300 70x59x4	1
H4b	GUIDING STRIP SP 65x70X9.7 MT26	1
H5	BODY ACTUATOR O-RING $\phi 63.5 \times \phi 3.53$	2
H6	DISTRIBUTOR DM047CVM1	1
H7	LANTERN	1
H8	PUMP	1
H9	COUPLING ND 48C+R42+ND 48 PU1P	1
H10	ROD GUIDE BUSHING	1
H11		
H12	CM13/12X17 CONU COOPER TUBE $\phi 8/10LG=180 \text{ mm}$	+1 5
H13	UM13/08x13CONU	1
H14	CM 13/08x13 CONU	1
H15	UM 13 /12x17 CONU	3
H16	R1T3/8 0700 S ETC 13ETC 13 90°	1
H17	R1 T 3/8 0340 2S ETC 13 90°	1
H18	R1 T 3/8 0520 2S ETC 13	1
H19	T2 3L8 0350 2S ETC 13	2
H20	DISTRIBUTOR : Q35/1 111/ A6 R1	1
H 21	VENT PLUG 3/8	1

REP.	NB.	DESIGNATION	DIMENSION	MATERIAL
1	1	FRAME		INOX 304
2	2	FOOT SPACER		INOX 304
3	2	FOOT TUBE		INOX 304
4	2	FEET		EPDM
5	2	CHC SCREW	M8x20	INOX A2
6	2	TRANSPORT BRACKET		INOX 304
7	6	Hm NUT	M6	INOX A2
8	6	FLAT WASHER	Ø6	INOX A2
9	2	REAR WHEEL		
10	2	STOVE HEAD SCREW	M8x16	INOX A2
11	1	TRANSPORT HANDLE		INOX 304
12	2	FLAT WASHER	Ø8	INOX A2
13	2	HEX-HEAD SCREW	M8x12	INOX A2
14	4	HEXAGON SOCKET SCREWS	M8x25	INOX A2
15	4	FLAT WASHER	Ø8	INOX A2
16	4	Hm NUT	M8	INOX A2
17	4	HEX-HEAD SCREW	M10x40	INOX A2
18	4	FLAT WASHER	Ø10	INOX A2
19	4	Hm NUT	M10	INOX A2
20	1	RESERVOIR		INOX 304
21	1	FLAT WASHER	Ø5	INOX A2
22	1	Hm NUT	M5	INOX A2
23	1	DOOR		INOX 304
24	4	STOVE HEAD SCREW	M5x10	INOX A2
25	2	FLAT WASHER	Ø5	INOX A2
26	2	Hm NUT	M5	INOX A2
27	1	NAMEPLATE		INOX 304
28	2	RIVET	Ø5	INOX A2
29	1	DOOR SEAL		SILICONE
30	4	CHC SCREW	M12x30	INOX A2
31	1	ACTUATOR BODY		ACIER C40
32	1	ACTUATOR ROD		INOX 304 RECTIFIED
33	1	GUIDING STRIP		
34	1	CYLINDER		INOX 304
35	1	LID GASKET		
36	1	ACTUATOR INSERT FLANG		INOX 304
37	1	PISTON JOINT		SILICONE
38	1	PISTON		INOX 304
39	1	FASTENING SCREW ROD/ PISTON		INOX 304
40	1	EXTRACTOR		INOX 304

REP.	NB.	DESIGNATION	DIMENSION	MATIERE
41				
42	2	HEX-HEAD SCREW	M12x50	INOX A2
43	1	HEXAGON SOCKET SCREWS	M6x10	INOX A2
44	1	LEFT FLANGE LID		INOX 304
45	1	RIGHT FLANGE LID		INOX 304
46	1	AXIS FLANGE LID		INOX 304
47	2	STOP SCREW		BRONZE
48	2	HEXAGONAL CAP NUT	M20	INOX A2
49	2	FLAT WASHER	Ø20	INOX A2
50	2	FLANGED BUSH	Ø25xØ28x21.5	
51	1	RIGHT LOCK KNOB		INOX 304
52	1	LEFT LOCK KNOB		INOX 304
53	2	SLOTTED COUNTERSUNK HEAD SCREWS	M6x8	INOX A2
54	2	FLANGED BUSH	Ø25xØ28x21.5	
55	2	PIN	Ø8	INOX 304
56	2	LID LOCKING SCREW		INOX 304
57	1	CLOSURE LID		INOX 304
58	3	NOZZLE	Ø14-Ø20-Ø30	INOX 304
59	1	NOZZLE NUT		INOX 304
60				
61	2	FLAT WASHER	Ø8	INOX A2
62	2	CHC SCREW	M8x45	INOX A2
63	1	HEXAGONAL NUT	M8	INOX A2
64	2	LOW HEX NUT	M8	INOX A2
65	1	LOW HEX NUT	M24	INOX A2
66	1	NARROW FLAT WASHER	Ø24	INOX A2
67	1	FLANGED BUSH	Ø8xØ10x9.5	
68	1	LINK AXES DISTRIBUTOR		INOX 304
69	1	FLANGED BUSH	Ø10xØ12x7	
70	1	KNEE LEVER AXIS		INOX 304
71	1	LOW HEX NUT	M24	INOX A2
72	1	NARROW FLAT WASHER	Ø24	INOX A2
73	1	LOWER STOPPER		INOX 304
74	1	BASHING	Ø10xØ12x15	
75	1	PRESSURE ROD		INOX 304
76	1	UPPER STOPPER		INOX 304
77	1	BASHING	Ø14xØ16x15	
78	1	KNEE LEVER		INOX 304
79	4	HEXAGONAL NUT	M10	INOX A2
80	4	FLAT WASHER	Ø10	INOX A2

REP.	NB.	DESIGNATION	DIMENSION	MATERIAL
81	4	HEX HEAD CAP SCREW		INOX A2
82	4	CHC SCREW	M6x20	INOX A2
83	2	STOVE HEAD SCREW	M4x10	INOX A2
84	6	FLAT WASHER	Ø4	INOX A2
85	4	HEXAGONAL NUT	M4	INOX A2
86	2	STOVE HEAD SCREW	M4x10	INOX A2

REP.	NB.	DESIGNATION	REFERENCE
E1	1	STUFFER ON/ OFF LUMINOUS BUTTON	ZB5 AW 833743
E2	1	SEALING CAP	ZBW 008A
E3	1	ON/OFF CONTACT	
E4	1	ELECTRICAL BOX	
E5	1	DIN RAIL	
E6	1	POWER PLUG 3P + T WITH 3.5 M WIRE	
E7	1	CABLE GLAND M16 PG13.5	
E8	1	CAP GLAND NUT M16	
E9	1	SUPPLY 12-19V	
E10	1	CABLE GLAND M12 PG9	
E11	1	CAP GLAND NUT M12	
E12	2	CABLE GLAND M20 PG16	
E13	2	CAP GLAND NUT M20	
E14	1	GROUND TERMINAL	
E15	2	SINGLE TERMINAL	
E16	1	CONTACTOR	LC1K0910B7
E17	1	THERMAL RELAY	LR2K0308
E18	1	ELECTRIC ENGINE T80-B5-IEC -0.75KW-4P	
E19	1	CAP GLAND NUT M 16	
	0.9 m	MOTOR CABLE 4X1.5	
	0.9 m	CONTROL CABLE 4X0.5	



DESIGNATION:	ELECTRICAL DIAGRAM	DATE: 07/10/04
MACHINE :	PHX 25	Modified on:

