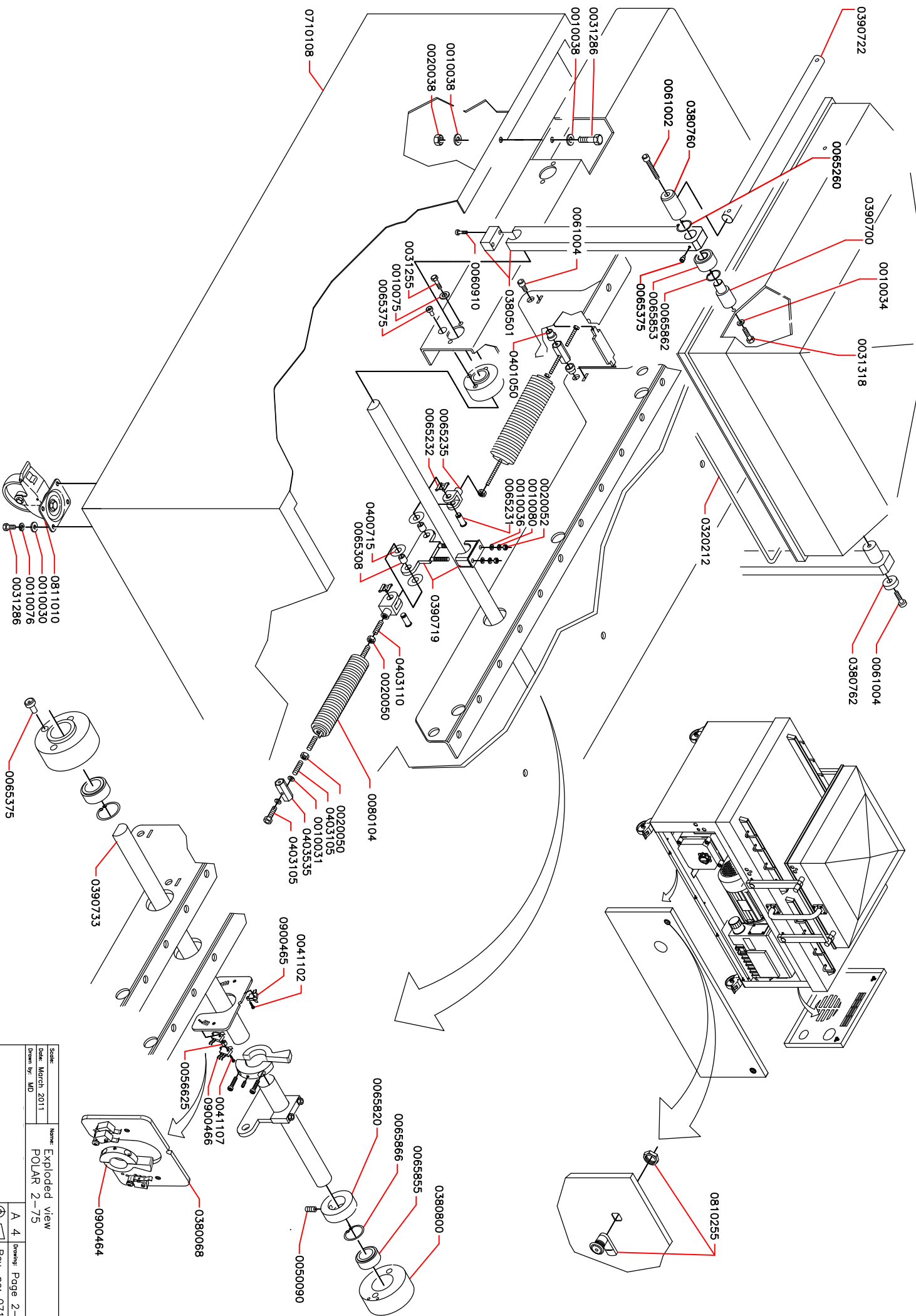
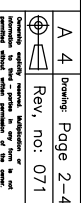
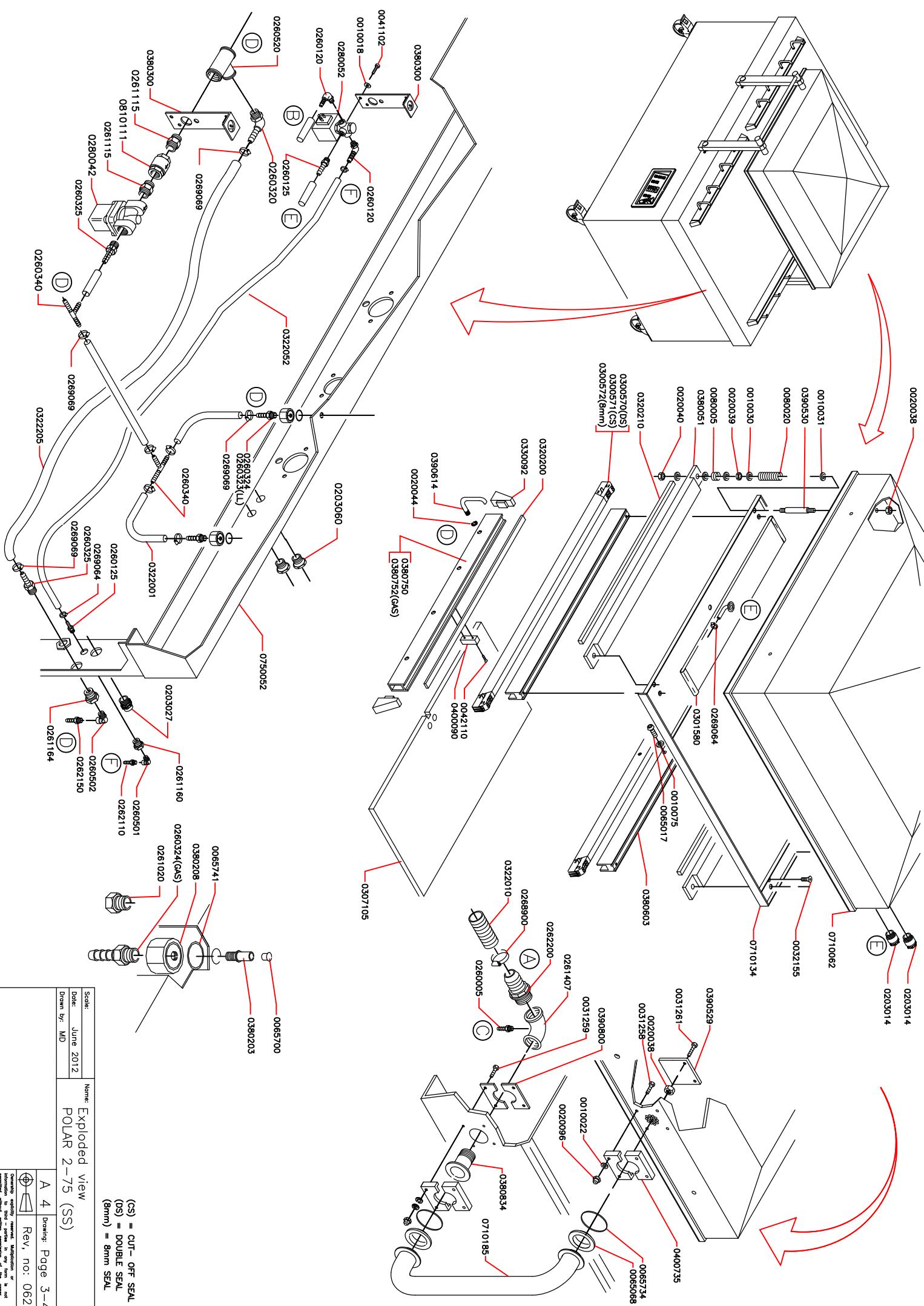


Scale:	Name:
Date: June 2012	Exploded view
Drawn by: MD	POLAR 2-75
A 4 Drawing: Page 1-4	
Rev. no: 061	



Scale:	1:1	Name:	Exploded view
Date:	March 2011	Part:	POLAR 2-75
Drawn by:	MD	Sheet:	A 4
		Rev. no.:	071
		Page:	2-4



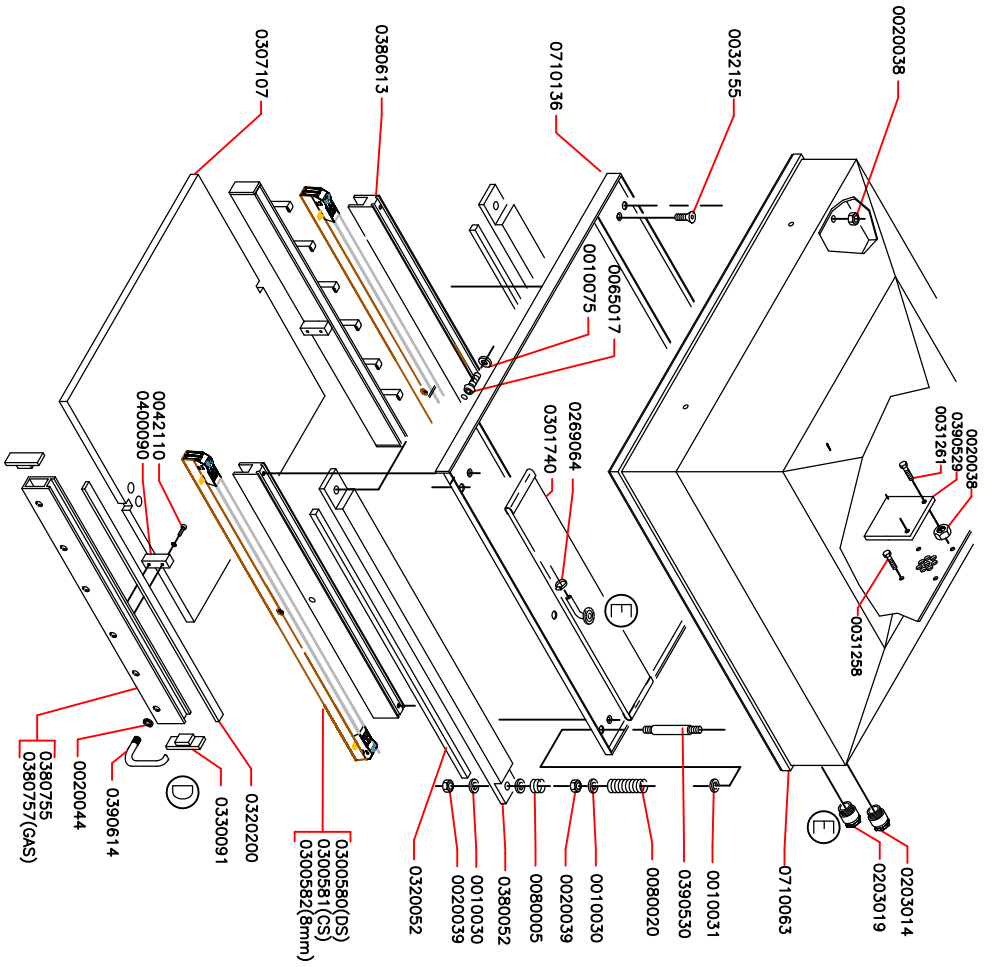
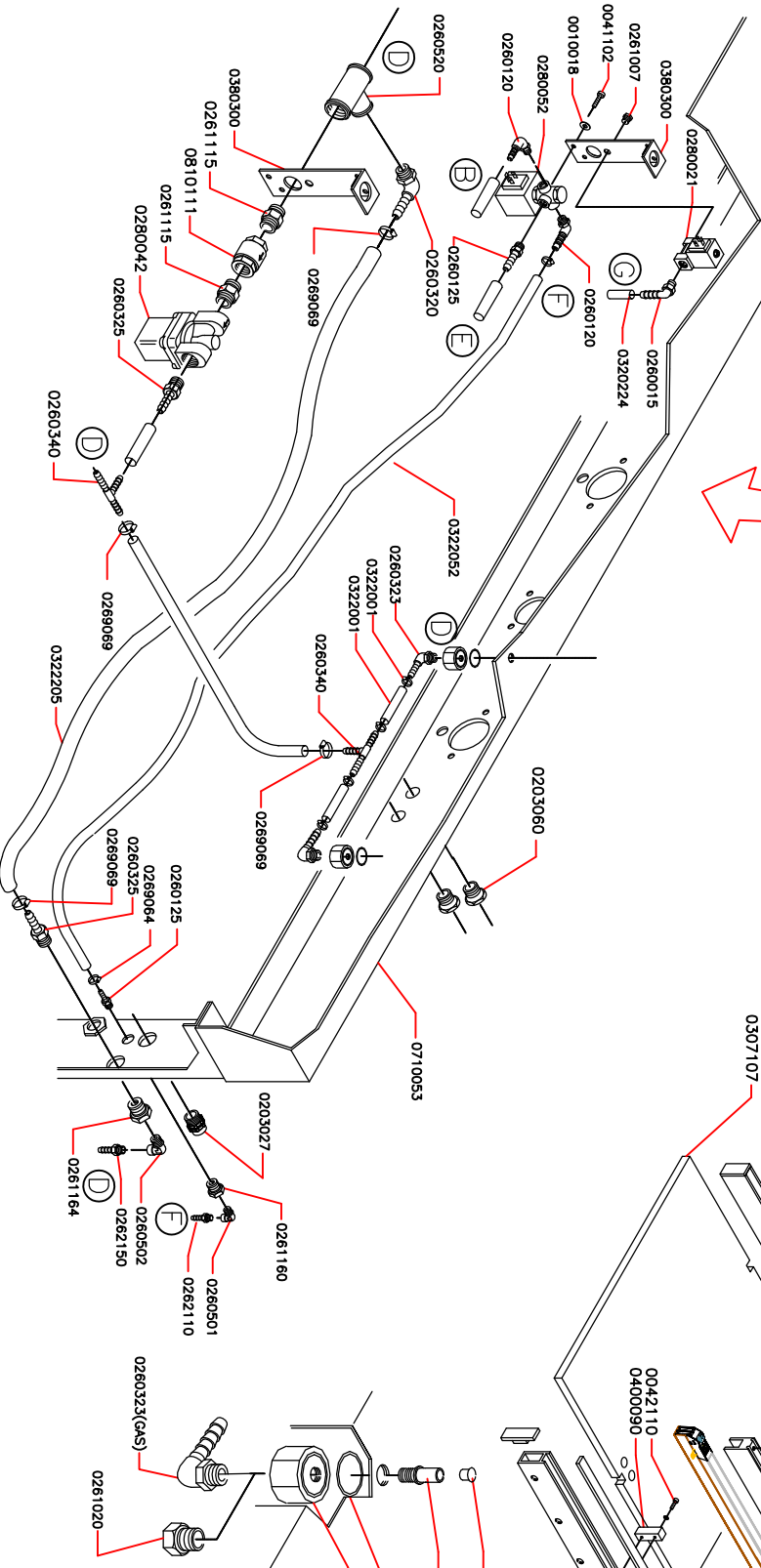
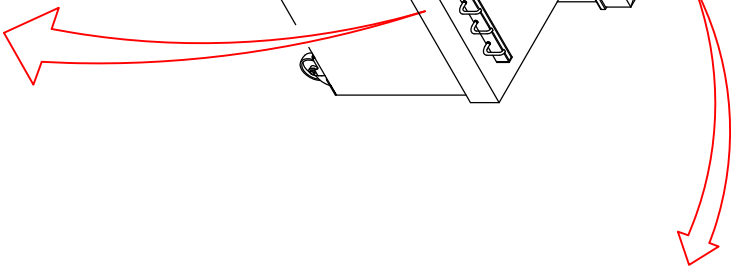
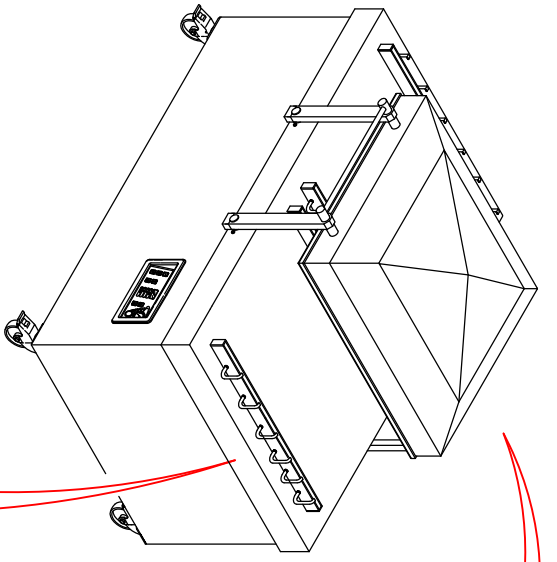


(CS) = CUT-OFF SEAL  
 (DS) = DOUBLE SEAL  
 (mm) = mm SEAL

Scale: A 4  
 Date: June 2012  
 Drawn by: MD

Part Name: POLAR 2-75 (SS)  
 Drawing: Page 3-4  
 Rev. no: 062

Copyright © 2012  
 All rights reserved.  
 No part of this document may be reproduced without permission of the owner.



(CS) = CUT-OFF SEAL  
 (DS) = DOUBLE SEAL  
 (Bmm) = Bmm SEAL

Scale:	Jan 2009	Name:	Exploded view
Date:	Jan 2009	Drawn by:	RVD
POLAR 2-75 (LL)		Sheet:	A 4
Drawing:		Page:	4-4
Rev. no.:			

Observe carefully the exploded view of the product. Information is given in order to help you in the assembly. Information is given in order to help you in the assembly. Information is given in order to help you in the assembly.